

MALACAÑANG

Manila

PMS LIBRARY

MFN 10582

BY THE PRESIDENT OF THE PHILIPPINES

PROCLAMATION NO. 267

RESERVING FOR SCHOOL SITE PURPOSES OF THE DAVAO NATIONAL AGRICULTURAL SCHOOL, CERTAIN PARCELS OF LAND OF THE PUBLIC DOMAIN SITUATED AT BARANGAYS CAMANSI, PROSPERIDAD, AND BANLASAN, MUNICIPALITY OF MONTEVISTA, COMPOSTELA VALLEY PROVINCE

Upon the recommendation of the Secretary of Environment and Natural Resources, and by virtue of the powers vested in me by law, **I, GLORIA MACAPAGAL-ARROYO**, President of the Philippines, do hereby withdraw from sale or settlement and reserve for school site purposes of the Davao National Agricultural School, under the administration of the Department of Education, subject to private rights, if any there be, certain parcels of land of the public domain situated at Barangays Camansi, Prosperidad, and Banlasan, Municipality of Montevista, Compostela Valley Province, Island of Mindanao, which parcels of land are more particularly described as follows:

**Lot 779-A, Csd-11-013648, Portion of Lot 559-A, Csd-11-011585
Identical to Lot 779, Pls-456
(DAVAO NATIONAL AGRICULTURAL SCHOOL)**

A parcel of land Lot No. 779-A, Csd-11013648, Portion of Lot 559-A, Csd-11-011585 identical to Lot 779, Pls-456, situated at Barangay Camansi, Municipality of Montevista, Compostela Valley Province, Island of Mindanao. Bounded on the NE., along lines 123-1-2-3-4-5-6-7-8-9-10-11-12-13-14-15-16-17-18-19-20-21-22-23-24-25-26-27-28-29-30-31-32-33-34-35-36-37-38-39-40-41-42-43-44-45 and 46 by Lot 779-B, Csd-11-013648, Public Easement 20.00 m. wide (Maputi Creek) on the SE., along line 46-47 by Lot 606; along line 47-48 by Lot 377; along line 48-49 by Lot 405; along line 49-50-51-52 by Lot 388; along line 52-53 by Lot 391; along line 53-54 by Lot 392, all of Pls-456; on the SW., along lines 54-55-56-57-58-59-60-61-62-63-64 and 65 by Lot 599-B, Csd-11-011585; along lines 65-66-67-68-69-70-71-72-73-74-75-76-77-78-79-80-81-82-83-84-85-86-87-88-89-90-91-92-93-94 by Lot 779-C, Csd-11-013648 Public Easement 20.00 m. wide (Creek) along lines 94-95-96-97-98-99-100-101-102-103-104-105-106-107-108-109-110-111-112-113-114-115-116 by Unclassified Public Forest; on the NW; along lines 116-117-118-119-120-121-122-123 by Lot 599-C, Csd-11-011585. Beginning at a point marked "1" on plan being N. 24 deg. 02'E., 3443.72 m. from BLLM No. 1, Pls-456.

THENCE:

S. 45 deg. 12'E., 89.37 m. to point 2;



PGMA Outgoing # 15317

S. 77 deg. 54'E.,	232.40 m. to point 3;
N. 80 deg. 55'E.,	60.52 m. to point 4;
S. 07 deg. 08'E.,	99.60 m. to point 5;
S. 70 deg. 00'E.,	79.84 m. to point 6;
S. 19 deg. 40'W.,	63.00 m. to point 7;
S. 35 deg. 16'E.,	65.58 m. to point 8;
N. 75 deg. 06'E.,	93.50 m. to point 9;
S. 06 deg. 24'W.,	55.90 m. to point 10;
S. 29 deg. 54'E.,	48.58 m. to point 11;
N. 70 deg. 32'E.,	121.90 m. to point 12;
S. 34 deg. 48'E.,	7.75 m. to point 13;
S. 00 deg. 28'W.,	59.71 m. to point 14;
S. 31 deg. 36'E.,	78.34 m. to point 15;
S. 70 deg. 02'E.,	179.24 m. to point 16;
S. 18 deg. 20'W.,	18.85 m. to point 17;
S. 06 deg. 07'E.,	144.46 m. to point 18;
S. 66 deg. 14'E.,	36.47 m. to point 19;
N. 77 deg. 29' E.,	64.51 m. to point 20;
S. 01 deg. 09'W.,	53.08 m. to point 21;
S. 49 deg. 03'E.,	189.33 m. to point 22;
N. 38 deg. 27'E.,	90.99 m. to point 23;
N. 48 deg. 04'W.,	85.28 m. to point 24;
N. 17 deg. 46'W.,	1.34 m. to point 25;
N. 67 deg. 17'E.,	132.21 m. to point 26;
N. 14 deg. 35'E.,	201.31 m. to point 27;
N. 13 deg. 00'E.,	127.57 m. to point 28;
N. 52 deg. 58'E.,	6.33 m. to point 29;
S. 74 deg. 44'E.,	57.79 m. to point 30;
S. 05 deg. 56'E.,	19.26 m. to point 31;
S. 37 deg. 57'W.,	49.25 m. to point 32;
S. 30 deg. 42'E.,	56.25 m. to point 33;
S. 59 deg. 47'E.,	87.87 m. to point 34;
S. 21 deg. 43'E.,	170.68 m. to point 35;
N. 63 deg. 06'E.,	4.64 m. to point 36;
N. 52 deg. 07'W.,	89.36 m. to point 37;
S. 55 deg. 48'W.,	84.45 m. to point 38;
S. 31 deg. 30'W.,	115.93 m. to point 39;
S. 04 deg. 32'E.,	51.29 m. to point 40;
S. 70 deg. 27'E.,	89.69 m. to point 41;
N. 68 deg. 20'E.,	78.17 m. to point 42;
S. 81 deg. 44'E.,	89.89 m. to point 43;
S. 35 deg. 22'W.,	41.14 m. to point 44;
S. 00 deg. 52'W.,	71.04 m. to point 45;
S. 59 deg. 24'E.,	267.58 m. to point 46;



S. 39 deg. 26'W., 458.73 m. to point 47;
S. 42 deg. 56'E., 454.33 m. to point 48;
S. 78 deg. 26'W., 442.68 m. to point 49;
N. 81 deg. 25'W., 332.53 m. to point 50;
S. 49 deg. 06'W., 137.71 m. to point 51;
S. 38 deg. 22'E., 251.85 m. to point 52;
S. 69 deg. 07'W., 238.14 m. to point 53;
S. 39 deg. 41'W., 198.61 m. to point 54;
N. 46 deg. 22'W., 100.00 m. to point 55;
N. 46 deg. 22'W., 100.00 m. to point 56;
N. 46 deg. 22'W., 100.00 m. to point 57;
N. 46 deg. 22'W., 100.00 m. to point 58;
N. 46 deg. 22'W., 100.00 m. to point 59;
N. 46 deg. 22'W., 100.00 m. to point 60;
N. 46 deg. 22'W., 100.00 m. to point 61;
N. 46 deg. 22'W., 100.00 m. to point 62;
N. 46 deg. 22'W., 193.07 m. to point 63;
N. 25 deg. 31'W., 200.00 m. to point 64;
N. 25 deg. 31'W., 183.80 m. to point 65;
N. 71 deg. 48'E., 137.76 m. to point 66;
S. 31 deg. 09'E., 46.17 m. to point 67;
N. 45 deg. 37'E., 48.79 m. to point 68;
S. 86 deg. 11'E., 22.12 m. to point 69;
N. 52 deg. 28'E., 31.39 m. to point 70;
S. 39 deg. 52'E., 73.30 m. to point 71;
N. 41 deg. 05'E., 36.39 m. to point 72;
S. 41 deg. 22'E., 16.60 m. to point 73;
N. 29 deg. 38'E., 14.56 m. to point 74;
S. 57 deg. 32'E., 42.22 m. to point 75;
S. 78 deg. 31'E., 18.94 m. to point 76;
S. 56 deg. 59'E., 35.47 m. to point 77;
N. 33 deg. 16'E., 20.75 m. to point 78;
S. 44 deg. 50'E., 63.00 m. to point 79;
S. 06 deg. 01'E., 13.35 m. to point 80;
N. 46 deg. 13'E., 35.09 m. to point 81;
S. 54 deg. 22'E., 26.00 m. to point 82;
S. 85 deg. 18'E., 20.29 m. to point 83;
S. 10 deg. 57'W., 19.23 m. to point 84;
S. 49 deg. 31'E., 65.98 m. to point 85;
N. 43 deg. 39'E., 46.10 m. to point 86;
N. 20 deg. 38'E., 20.77 m. to point 87;
S. 62 deg. 51'E., 1.31 m. to point 88;
S. 20 deg. 29'E., 9.03 m. to point 89;
S. 33 deg. 51'W., 48.33 m. to point 90;



S. 80 deg. 38'E.,	67.59 m. to point 91;
N. 46 deg. 40'E.,	40.99 m. to point 92;
S. 61 deg. 27'E.,	22.87 m. to point 93;
N. 03 deg. 37'E.,	20.25 m. to point 94;
N. 03 deg. 37'E.,	374.04 m. to point 95;
N. 61 deg. 19'W.,	169.36 m. to point 96;
N. 29 deg. 54'E.,	166.25 m. to point 97;
N. 32 deg. 16'E.,	109.95 m. to point 98;
N. 33 deg. 29'E.,	219.00 m. to point 99;
N. 44 deg. 28'W.,	54.72 m. to point 100;
N. 14 deg. 55'W.,	18.72 m. to point 101;
S. 77 deg. 03'W.,	25.44 m. to point 102;
S. 61 deg. 33'W.,	42.00 m. to point 103;
S. 71 deg. 50'W.,	34.96 m. to point 104;
S. 03 deg. 33'W.,	22.13 m. to point 105;
S. 85 deg. 56'W.,	32.42 m. to point 106;
N. 07 deg. 01'E.,	26.71 m. to point 107;
S. 85 deg. 43'W.,	19.55 m. to point 108;
N. 09 deg. 53'E.,	32.28 m. to point 109;
S. 74 deg. 29'W.,	18.76 m. to point 110;
N. 27 deg. 55'W.,	28.96 m. to point 111;
S. 13 deg. 54'W.,	24.11 m. to point 112;
S. 77 deg. 55'W.,	32.96 m. to point 113;
S. 20 deg. 00'E.,	38.66 m. to point 114;
S. 31 deg. 07'W.,	21.22 m. to point 115;
N. 48 deg. 34'W.,	124.27 m. to point 116;
N. 55 deg. 55'W.,	55.27 m. to point 117;
N. 26 deg. 06'W.,	74.28 m. to point 118;
N. 41 deg. 44'W.,	131.33 m. to point 119;
N. 65 deg. 19'W.,	131.08 m. to point 120;
N. 57 deg. 23'W.,	103.02 m. to point 121;
N. 45 deg. 53'W.,	189.21 m. to point 122;
N. 31 deg. 17'E.,	106.89 m. to point 123;
S. 58 deg. 36'E.,	90.00 m. to point of

beginning, containing an area of ONE MILLION NINE HUNDRED TWENTY SIX THOUSAND SIX HUNDRED (1,926,600) SQUARE METERS, MORE OR LESS. Corners 1-2-3-4-5-6-7-8-9-10-11-12-13-14-15-16-17-18-19-20-21-22-23-24-25-26-27-28-29-30-31-32-33-34-35-36-37-38-39-40-41-42-43-44-45 and 46 are "GS" Cyl. Conc. Mons. 15x40 cm. Corners 47-48-49-50-51-52-53 are "Old Pls", Corners 54-55-56-57-58-59-60-61-62-63-64-65 and 94-95-96-97-98-99-100-101-102-103-104-105-106-107-108-109-110-111-112-113-114-115-116-117-118-119-120-121-122-123 are "Old Gs" Cyl. Conc. Mons. 15x60 cm. and the rest along Creek are stakes. Bearings: True; Date of Original Survey, January 9, 1956 to December 31, 1957; Date Subdivision Survey,



December 18, 1997 by Geodetic Engineer, Macario D. Palon; Date Approved, April 23, 1998. NOTE: Lot No. 779-A, Csd-11-013648, is equivalent to Lot 1581. Pls-456 and covered by Proposed Presidential Proclamation.

**Lot 771-A, Csd-11-013647, Portion of Lot 588-A, Csd-11-011585 identical to
Lot 771, Pls-456
(DAVAO NATIONAL AGRICULTURAL SCHOOL)**

A parcel of land Lot 771-A, Csd-11-013647, portion of Lot 588-A, Csd-11-011585 identical to Lot 771, Pls-456, situated at Barangay Banlasan, Municipality of Montevista, Compostela Valley Province, Island of Mindanao. Bounded on the NE., along line 23-24 by Lot 588-C, Csd-011585; along lines 24-25-26 by Lot 771-C, Csd-11-013647; Public Easement 20.00 m. wide along lines 26-27-28-29 by Lot 588-B, Csd-11-011585; on the SE., along lines 29-30-31-32-33-34-35-36-37-38-39-40-41-42-43-44-45-46-47-48-49-50-51-52-53-54 by Road; on the SW., along line 54-55 by Lot 374, Pls-456; along lines 55-1-2-3-4 by Lot 771-B, Public Easement 20.00 m. wide (Maputi Creek); on the NW., along lines 4-5-6-7-8-9-10-11-12-13-14-15-16-17-18-19-20-21-22 and 23 by Lot 771-B, Csd-11-013647, Public Easement 20.00 m. wide (Manacong Creek). Beginning from point marked "1" on plan, being N. 21 deg. 08'E., 2213.84 m., from BLLM No. 1, Pls-456.

T H E N C E:

N. 72 deg. 59'W.,	130.49 m. to point 2;
N. 89 deg. 29'W.,	247.09 m. to point 3;
N. 65 deg. 17'W.,	164.38 m. to point 4;
N. 64 deg. 23'E.,	20.01 m. to point 5;
S. 89 deg. 19'W.,	103.29 m. to point 6;
N. 53 deg. 22'E.,	106.83 m. to point 7;
S. 78 deg. 17'E.,	56.89 m. to point 8;
N. 51 deg. 57'E.,	69.89 m. to point 9;
N. 04 deg. 09'W.,	45.13 m. to point 10;
S. 33 deg. 17'E.,	34.73 m. to point 11;
N. 79 deg. 45'E.,	83.16 m. to point 12;
N. 89 deg. 12'E.,	61.27 m. to point 13;
N. 45 deg. 07'E.,	64.95 m. to point 14;
N. 04 deg. 26'E.,	58.12 m. to point 15;
N. 79 deg. 07'E.,	28.48 m. to point 16;
S. 45 deg. 38'E.,	68.80 m. to point 17;
N. 77 deg. 47'E.,	60.01 m. to point 18;
N. 26 deg. 52'W.,	127.00 m. to point 19;
N. 08 deg. 55'W.,	63.43 m. to point 20;



N. 18 deg. 36'W.,	24.07 m. to point 21;
N. 86 deg. 45'E.,	48.78 m. to point 22;
N. 16 deg. 27'E.,	78.57 m. to point 23;
S. 58 deg. 08'E.,	71.41 m. to point 24;
S. 14 deg. 18'E.,	80.63 m. to point 25;
N. 70 deg. 33'E.,	66.39 m. to point 26;
S. 70 deg. 32'E.,	182.52 m. to point 27;
S. 61 deg. 02'E.,	158.69 m. to point 28;
S. 35 deg. 32'E.,	64.95 m. to point 29;
S. 73 deg. 00'W.,	20.80 m. to point 30;
S. 66 deg. 41'W.,	29.76 m. to point 31;
N. 66 deg. 14'W.,	29.94 m. to point 32;
S. 75 deg. 32'W.,	61.92 m. to point 33;
S. 58 deg. 13'W.,	22.60 m. to point 34;
N. 84 deg. 09'W.,	43.77 m. to point 35;
S. 49 deg. 50'W.,	26.53 m. to point 36;
S. 71 deg. 09'W.,	12.93 m. to point 37;
N. 44 deg. 27'W.,	9.55 m. to point 38;
N. 01 deg. 25'W.,	13.41 m. to point 39;
N. 31 deg. 47'E.,	79.31 m. to point 40;
N. 00 deg. 06'E.,	26.46 m. to point 41;
N. 84 deg. 45'W.,	13.12 m. to point 42;
S. 65 deg. 50'W.,	21.99 m. to point 43;
S. 56 deg. 49'W.,	66.29 m. to point 44;
S. 70 deg. 40'W.,	81.23 m. to point 45;
S. 74 deg. 03'W.,	109.69 m. to point 46;
S. 52 deg. 09'W.,	48.02 m. to point 47;
S. 42 deg. 32'W.,	36.91 m. to point 48;
S. 04 deg. 30'W.,	42.81 m. to point 49;
S. 13 deg. 11'W.,	45.22 m. to point 50;
S. 14 deg. 25'E.,	31.53 m. to point 51;
S. 33 deg. 56'W.,	62.55 m. to point 52;
S. 08 deg. 55'W.,	49.71 m. to point 53;
S. 10 deg. 24'W.,	38.58 m. to point 54;
N. 67 deg. 56'W.,	55.61 m. to point 55;
N. 17 deg. 02'E.,	20.00 m. to point of

beginning, with an area of ONE HUNDRED NINETY THREE THOUSAND THIRTY THREE (193,033) SQUARE METERS, MORE OR LESS. Corners 23-24-25-26 are "GS" Cyl. Conc. Mons. 15 x 60 cm. Corners 27-28-29-30-31-32-33-34-35-36-37-38-39-40-41-42-43-44-45-46-47-48-49-50-51-52-53-54-55 are "OLD PLS" Cyl. Conc. Mons. 15 x 60 cm. and all the rest along creek are stakes. Bearing, true. Date of Original Survey January 9, 1956 to December 31, 1957; Date of Subdivision Survey



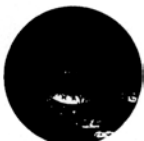
December 17, 1997 by Geodetic Engineer Macario D. Palen and Date Approved, April 13, 1998. NOTE: Lot NO. 771-A, Csd-11-013647, is equivalent to Lot 1584, Pls-456, and covered by Proposed Presidential Proclamation.

**Lot 774-A, Csd-11-013649, Portion of Lot 598-A, Csd-11-011585 identical to
Lot 774, Pls-456
(DAVAO NATIONAL AGRICULTURAL SCHOOL)**

A parcel of land Lot 774-A, Csd-11-013649, portion of Lot 598-A, Csd-11-011585 identical to Lot 774, Pls-456, situated at Barangay Prosperided, Municipality of Montevista, Compostela Valley Province, Island of Mindanao. Bounded on the N & NE., along lines 90-91-92-93-94 by Unclassified Public Forest; along lines 94-95-96-97-98-99-100; 01-102-1 by Lot 772, Pls-456; on the SE., along lines 1-2-3-4-5-6-7-8-9-10-11-12-13-14-15-16-17-18-19-20-21-22 by Lot 774-B, Public Easement 20.00 m. wide (Manacong Creek); on the SW., along lines 22-23-24-25-26-27-28-29-30-31-32-33-34-35-36-37-38-39-40-41-42-43-44-45-46-47-48-49-50-51-52-53-54-55-56-57-58-59-60-61-62-63-64-65-66-67-68 by Lot 774-B, Csd-11-013649, Public Easement 20.00 m. wide (Maputi Creek); on the NW., along lines 68-69-70-71-72-73-74-75-76 by Lot 7778, Pls-456, along lines 76-77-78-79-80-81-82-83-84 by Unclassified Public Forest; and along lines 84, 85; 86; 87; 88; 89; 90 by Lot 777, Pls-456. Beginning from point marked "1" on plan, being N. 18 deg. 24'W., 2836.96 m. from BLLM. No. 1, Pls-456.

THE N C E:

- | | |
|-------------------|-----------------------|
| S. 15 deg. 17'W., | 63.69 m. to point 2; |
| N. 84 deg. 07'W., | 30.23 m. to point 3; |
| S. 54 deg. 26'W., | 74.33 m. to point 4; |
| S. 33 deg. 35'E., | 60.55 m. to point 5; |
| S. 08 deg. 05'E., | 67.01 m. to point 6; |
| S. 82 deg. 03'W., | 61.11 m. to point 7; |
| S. 35 deg. 12'W., | 37.31 m. to point 8; |
| S. 00 deg. 18'E., | 57.70 m. to point 9; |
| S. 46 deg. 23'W., | 23.12 m. to point 10; |
| S. 88 deg. 13'W., | 43.36 m. to point 11; |
| S. 82 deg. 34'W., | 49.51 m. to point 12; |
| N. 12 deg. 33'W., | 46.78 m. to point 13; |
| N. 51 deg. 17'W., | 48.76 m. to point 14; |
| S. 55 deg. 52'W., | 64.36 m. to point 15; |
| S. 00 deg. 29'E., | 94.08 m. to point 16; |
| S. 48 deg. 29'W., | 13.41 m. to point 17; |
| N. 80 deg. 11'W., | 53.64 m. to point 18; |
| S. 65 deg. 23'W., | 40.02 m. to point 19; |
| S. 54 deg. 36'W., | 75.64 m. to point 20; |
| S. 89 deg. 12'W., | 95.22 m. to point 21; |



S. 61 deg. 00'W.,	81.81 m. to point 22;
N. 26 deg. 11'E.,	91.15 m. to point 23;
N. 13 deg. 28'W.,	86.89 m. to point 24;
N. 80 deg. 36'W.,	40.45 m. to point 25;
S. 37 deg. 01'W.,	60.11 m. to point 26;
N. 73 deg. 30'W.,	71.25 m. to point 27;
S. 66 deg. 59'W.,	71.01 m. to point 28;
N. 72 deg. 55'W.,	19.98 m. to point 29;
N. 36 deg. 32'E.,	101.25 m. to point 30;
S. 54 deg. 05'E.,	72.75 m. to point 31;
N. 65 deg. 55'E.,	82.36 m. to point 32;
N. 18 deg. 46'W.,	231.94 m. to point 33;
N. 61 deg. 26'W.,	92.59 m. to point 34;
N. 45 deg. 23'E.,	45.33 m. to point 35;
N. 23 deg. 01'W.,	81.19 m. to point 36;
N. 74 deg. 25'W.,	122.99 m. to point 37;
S. 53 deg. 15'W.,	47.70 m. to point 38;
S. 13 deg. 48'W.,	146.10 m. to point 39;
S. 14 deg. 31'W.,	173.48 m. to point 40;
S. 65 deg. 37'W.,	149.64 m. to point 41;
S. 59 deg. 47'W.,	23.43 m. to point 42;
S. 45 deg. 50'E.,	20.01 m. to point 43;
N. 13 deg. 17'W.,	107.53 m. to point 44;
S. 80 deg. 04'W.,	88.35 m. to point 45;
N. 09 deg. 42'W.,	80.72 m. to point 46;
N. 13 deg. 03'E.,	52.58 m. to point 47;
N. 33 deg. 00'W.,	34.50 m. to point 48;
N. 70 deg. 37'W.,	189.82 m. to point 49;
N. 27 deg. 43'W.,	37.92 m. to point 50;
N. 01 deg. 31'E.,	64.13 m. to point 51;
N. 39 deg. 18'W.,	66.46 m. to point 52;
S. 74 deg. 19'W.,	95.57 m. to point 53;
N. 03 deg. 29'W.,	82.78 m. to point 54;
S. 83 deg. 14'W.,	113.07 m. to point 55;
N. 10 deg. 41'E.,	78.44 m. to point 56;
N. 70 deg. 47'W.,	92.40 m. to point 57;
N. 07 deg. 06'W.,	120.47 m. to point 58;
S. 85 deg. 44'W.,	107.81 m. to point 59;
N. 79 deg. 21'W.,	208.85 m. to point 60;
N. 43 deg. 35'W.,	278.64 m. to point 61;
N. 00 deg. 08'W.,	65.07 m. to point 62;
S. 76 deg. 40'E.,	17.00 m. to point 63;
N. 30 deg. 53'E.,	64.91 m. to point 64;
N. 44 deg. 19'W.,	74.70 m. to point 65;



N. 26 deg. 32'W.,	6.49 m. to point 66;
N. 55 deg. 10'E.,	42.17 m. to point 67;
N. 01 deg. 32'W.,	51.45 m. to point 68;
N. 87 deg. 50'E.,	20.34 m. to point 69;
N. 45 deg. 10'E.,	39.46 m. to point 70;
N. 41 deg. 48'E.,	70.74 m. to point 71;
S. 52 deg. 18'E.,	76.41 m. to point 72;
N. 70 deg. 35'E.,	38.38 m. to point 73;
N. 07 deg. 38'W.,	66.50 m. to point 74;
N. 35 deg. 15'E.,	126.16 m. to point 75;
N. 13 deg. 05'W.,	37.31 m. to point 76;
N. 84 deg. 58'E.,	43.93 m. to point 77;
S. 54 deg. 30'E.,	47.44 m. to point 78;
S. 14 deg. 07'E.,	38.24 m. to point 79;
S. 35 deg. 42'E.,	85.13 m. to point 80;
S. 85 deg. 35'E.,	68.03 m. to point 81;
N. 23 deg. 52'W.,	177.62 m. to point 82;
N. 45 deg. 52'E.,	55.17 m. to point 83;
S. 80 deg. 14'E.,	61.38 m. to point 84;
N. 69 deg. 45'E.,	275.59 m. to point 85;
S. 51 deg. 59'E.,	332.12 m. to point 86;
S. 21 deg. 46'E.,	50.87 m. to point 87;
N. 64 deg. 32'E.,	34.52 m. to point 88;
S. 60 deg. 52'E.,	22.66 m. to point 89;
S. 79 deg. 50'E.,	71.61 m. to point 90;
N. 84 deg. 03'E.,	274.55 m. to point 91;
S. 71 deg. 02'E.,	168.37 m. to point 92;
S. 50 deg. 33'E.,	66.90 m. to point 93;
N. 63 deg. 56'E.,	401.82 m. to point 94;
S. 13 deg. 17'E.,	24.73 m. to point 95;
S. 08 deg. 17'E.,	158.75 m. to point 96;
S. 20 deg. 54'E.,	52.50 m. to point 97;
S. 34 deg. 14'E.,	287.62 m. to point 98;
S. 38 deg. 20'E.,	312.48 m. to point 99;
S. 44 deg. 02'E.,	142.62 m. to point 100;
S. 30 deg. 12'W.,	87.76 m. to point 101;
S. 29 deg. 17'W.,	260.25 m. to point 102;
S. 63 deg. 13'E.,	59.18 m. to point of

beginning, with an area of TWO MILLION FIVE HUNDRED SEVEN THOUSAND FIVE HUNDRED EIGHTEEN (2,507,518) SQUARE METERS, MORE OR LESS. Corners 72-73-74-75-76-77-78-79-80-81-82-83-84-85-86-87-88-89-90-91-92-93, are "Old Gs", Corners 94-95-96-97-98-99-100-101-102 are "Old Pls" Cyl. Conc. Mons. 15 x 60 cm. and the rest along Creeks are stakes. Bearings True; Date of Original Survey



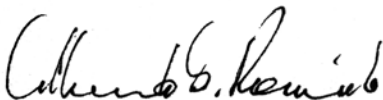
January 9, 1956 to December 31, 1957; Date of Subdivision Survey December 15, 1997 by Geodetic Engineer Macario D. Palon and approved on April 23, 1998. NOTE: Lot No. 774-A, Csd-11-013649 is equivalent to Lot 1587, Pls-456 and covered by Proposed Presidential Proclamation.

The tracts of land herein reserved shall be non-alienable and shall not be subject to occupation, entry, sale, lease, or other disposition until again declared alienable by proclamation of the President.

IN WITNESS WHEREOF, I have hereunto set my hand and caused the seal of the Republic of the Philippines to be affixed.

Done in the City of Manila, this **30th** day of *September*, in the year of Our Lord, two thousand and two.

By the President:



ALBERTO G. ROMULO
Executive Secretary

